

30 May 2011

Company Announcements Office
Australian Securities Exchange
Level 5, Riverside Centre
123 Eagle Street
Brisbane QLD 4000

ASX:SAY

Dear Madam

Map of the Concession Area, Yunnan Province, China

Subsequent to the Company's ASX Announcement on 12 May 2011 of the proposed acquisition of an 11.25% indirect interest in a Concession in Yunnan Province, China on May 12, 2011, the Company now provides a map showing the region of China where the Concession is situated.

The Honghuayuan Concession is southwest of Dali City in Yunnan Province, to the west of the town of Weishan. The Concession occupies 48.15 square kilometres in area and is prospective for copper, gold, zinc, lead, iron and antimony. At present, electromagnetic soundings are being recorded over the most prospective areas within the Concession, this work is being funded by the Concession holder. Figure 1 shows the position of the Concession within the background of the Yunnan Province shown as in insert in relation to the whole of China. The Concession area is in a mountainous region of Yunnan with access to some areas restricted to minor gravel roads, although access is quite reasonable.



Figure 1. General location map – with insert showing Yunnan Province in the PR China.



Figure 2. The general location of the Concession (shown as the black circle) on an image generated from Google Earth - in relationship to the town of Weishan (shown as the white star), Weishan is situated south of Dali City.

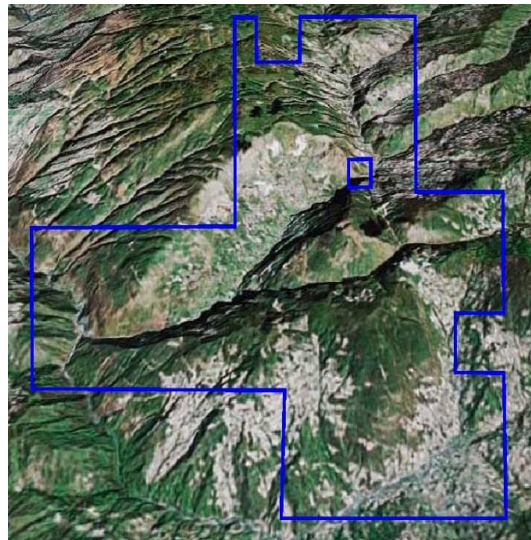


Figure 3. The outline of the Concession is shown as the blue line in this figure.

Yours sincerely



Richard Haren PhD
Director

The information in this report that relates to exploration results and mineral resources is based on information compiled by Dr. Richard Haren who is a corporate Member of The Australasian Institute of Mining and Metallurgy and who has sufficient experience which is relevant to the style of mineralisation and type of deposit under consideration and to the activity undertaken to qualify as a Competent Person as defined in the 2004 Edition of the Australasian Code for Reporting of Exploration Results, Mineral Resources and Ore Reserves. Dr Richard Haren is a self employed consultant who is retained by SAY as Non-Executive Director. He has consented to the inclusion in this report of the matters based on his information in the form and context in which it appears.